

THE SPIRIT OF MODERN DESIGN LIVES ON.
INTRODUCING MARVIN® MODERN.



BORN FROM,
AND INFORMED
BY, THE NEEDS
OF ARCHITECTS
AND BUILDERS,
MARVIN® MODERN
IS INTENTIONAL
IN BOTH PROCESS
AND PRODUCT.

WE'VE CONSIDERED
HOW EVERY DETAIL
CAN SERVE YOU
AND YOUR VISION,
GUIDED BY THE
QUALITY AND
INNOVATION THAT
ONLY MARVIN CAN
DELIVER.



THIS IS DESIGN IN YOUR HANDS.

THIS IS OUR MODULAR SYSTEM.

Every product works together as part of a visual system to help you design and configure with ease and confidence. Consistent profiles across all products—along with special innovations like our integrated mull channel—maintain the narrow and clean sightlines so central to modern design.

Pictured below: Modern Direct Glaze Windows (left) and the Modern Multi-Slide Door (right)

CONSISTENT
NARROW PROFILES
TO MINIMIZE SYSTEM
ALIGNMENT GUESSWORK

INTEGRATED
MULL CHANNEL
PRESERVES SIGHTLINES AND SUPPORTS
STRUCTURAL PERFORMANCE

MAINTAIN
SIGHTLINES LESS
THAN 3"
ACROSS ALL PRODUCTS

PREFABRICATED AND
PRE-CONFIGURED
COMPONENTS SAVE
ON INSTALLATION TIME

THIS IS POWER IN SIMPLICITY.

THIS IS OUR PROPRIETARY FRAME.

A new frame design reimagines how modern windows and doors can perform. From exterior to interior, a solid piece of High-Density Fiberglass forms our unique new frame, which requires no additional material to aid in its thermal performance—a departure from thermally broken competitors. The frame also features an integrated mull channel that enables mull reinforcement while maintaining sightlines and preserving thermal efficiency.

Pictured right: Modern Direct Glaze Window cross-section



PROPRIETARY
FRAME DESIGN
HELPS KEEP INTERIOR
TEMPERATURES COMFORTABLE

BUILT-IN
DRYWALL RETURN
FOR EASY WALL INTEGRATION



THE FRAME'S INTEGRATED
MULL CHANNEL
ENABLES MULL REINFORCEMENT WITHOUT
ALTERING SIGHTLINES

THERMALLY EFFICIENT
TO PERFORM IN DEMANDING CLIMATES

DURABLE FINISH
MEETS THE HIGHEST INDUSTRY STANDARDS

REVOLUTIONARY HIGH-DENSITY
FIBERGLASS MATERIAL

THIS IS PERFORMANCE BEYOND EXPECTATIONS.

THIS IS HIGH-DENSITY FIBERGLASS.

We envisioned more performance potential for modern windows and doors. So we developed High-Density Fiberglass, a revolutionary material that echoes the look of its modern counterparts with better thermal efficiency.

Pictured above: Modern Direct Glaze mullion Window cross-section



ELEMENTAL
ALUMINUM INTERIOR
WITH LOW-GLOSS FINISH

STRENGTH AND DURABILITY
RATED UP TO PG40
FOR IMPRESSIVE PERFORMANCE

DETAILS THAT
ENHANCE THE VIEW
LIKE CONCEALED FASTENERS,
MINIMAL BLACK SPACER BARS,
AND BLACK SEALANT

THIS IS HOW IT ALL

COMES TOGETHER.

Combine product ingenuity with pure modern aesthetics and the result is truly stunning. The Marvin® Modern line is made to be built big and perform at scale, complemented by the power of critical design details. A low-gloss aluminum interior adds an elemental feel. Black spacer bars and black sealant minimize visual distractions. And internal covers completely disguise fasteners for clean, crisp edges.

Pictured left: Modern Multi-Slide Door with a Clear Anodized interior finish

THIS WAS MADE FOR YOU.

WE PARTNERED
WITH ARCHITECTS
AND BUILDERS
TO DEVELOP A
PROCESS THAT
ANSWERS THEIR
NEEDS AT EVERY
STEP ALONG
THE WAY.



DELIVERY

We worked to create packaging and delivery systems that help you plan better and make the best use of your time and resources.



It begins with **PRODUCT WEIGHTS** listed on the quote and order confirmation – so you can plan proper equipment and resources in advance. We also provide prominent **WEIGHT LABELS** on every Marvin® Modern product for easy on-site reference.



All products are packaged to protect components during shipping and handling. Ergonomic **LIFT POINTS** on each end of the unit help you leverage heavy products. Staple-free **CARDBOARD BOOTS** are fully wrapped around each corner. Dual skid plates provide rigidity and maneuverability, so you can slide products across different floor surfaces.

OTHER CONSIDERATIONS

- + Glass is covered with protective film
- + Each unit is stretch wrapped



INSTALLATION

On the job site, efficiency is key. So we created thoughtful products and accessories that ensure the installation runs smoothly.



The **JOB BOX** contains all the important parts and documentation you need, in one convenient place. Specially stocked according to your order, inside every job box you'll find:

- + Product hardware
- + Installation screws
- + Injection sealant
- + Installation instructions
- + Order information
- + Warranty registration
- + Touch-up and repair kits
- + And more

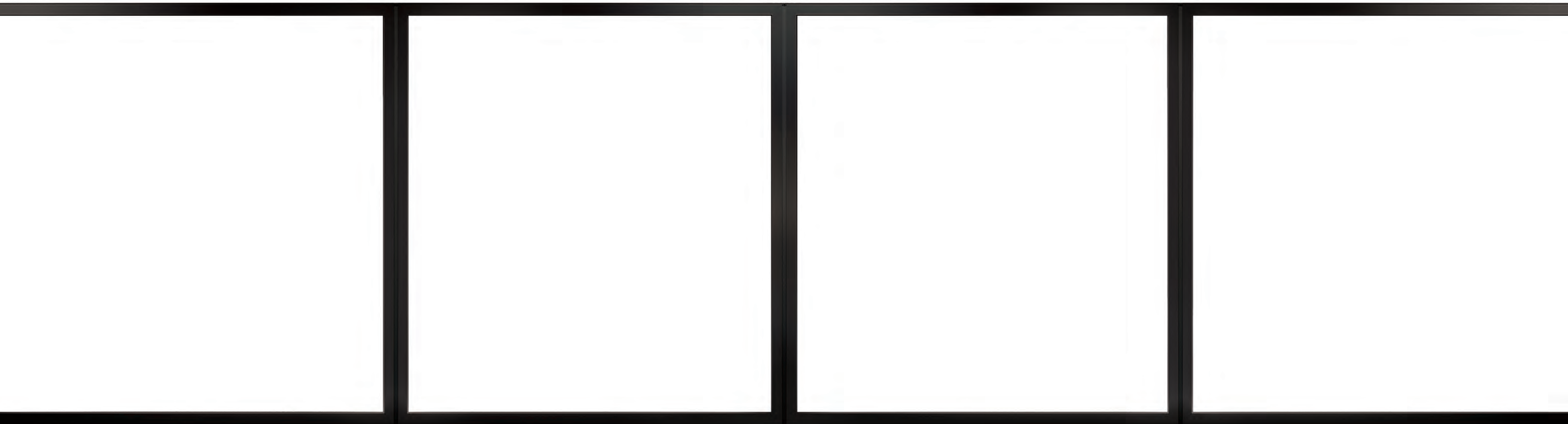
Never lose time tracking down an extra part or reference material.

OTHER CONSIDERATIONS

- + Prefabricated and pre-configured components reduce install time
- + Drywall recess in the frame accepts a drywall return for seamless integration



THE MODERN DIRECT GLAZE WINDOW



FEATURES

Large expanses of glass for maximum views with numerous configurations and sizes available

Rectangular and polygon shapes

Frame recess accepts a drywall return for seamless integration

Horizontal or vertical ribbon mulling capabilities

Non-certified mulling capabilities

GLASS OPTIONS

Dual or Triple-Pane insulated glass
Interior cover depths vary based on OA glass thickness

Argon or Krypton-Argon blend gas

Black spacer and silicone sealant

Low E1, E2, E3, ELR, or ERS glass options

Specialty glass: Frosted, Obscure, and Gray or Bronze Tint

MULLING

Mulled frames are less than 3" wide

Approximate 3" frame divider simulates a mulled Direct Glaze frame

CONFIGURATIONS AND SIZING

Max Frame Size Certified 141 ³/₈" x 93 ³/₈"

Jamb depth 4 ¹/₂"

Rectangle /Square

Isosceles Triangle

Right Triangle, right or left

Trapezoid, right or left

Pentagon

SINGLE UNIT PERFORMANCE RATINGS

Air Tested to PSF 6.24

Water Tested to PSF 12.1

WDMA Performance Grade CW-PG40-FW

Max Frame Size Height 93 ³/₈"

Max Frame Size Width 141 ³/₈"

VERTICAL OR HORIZONTAL MULLED UNITS PERFORMANCE RATINGS

Air Tested to PSF 1.57

Water Tested to PSF 6.0

WDMA Performance Grade CW-PG40-FW

Max Frame Size Height 96"

Max Frame Size Width 168"

Max Tributary Width or Height 84"

NRFC THERMAL U-FACTOR

Dual-Pane IG Low E2 with Argon 0.28



THE MODERN MULTI-SLIDE DOOR



FEATURES

Large expanses of glass for maximum views with numerous configurations and sizes available

Consistent panel thickness with narrow stiles and rails, regardless of configuration or size

Minimalist hardware designed for superior functionality, features a sleek and modern form

Three sill options are available in flush, performance, and high performance

HARDWARE

Minimal pull and latch handles

Keyed or non-keyed options available

Multipoint lock

Quad rollers with end adjustment

GLASS OPTIONS

Dual or Triple-Pane insulated glass

Argon or Krypton-Argon blend gas

Black spacer and silicone sealant

Low E1, E2, E3, ELR, or ERS glass options

Specialty glass: Frosted, Obscure, and Gray or Bronze tint

ADD-ONS

Automatic Control

Lock Status Sensor

Screen options available

PERFORMANCE RATINGS

| | |
|--------------------------------|------------------|
| Uni-Directional Stacked | up to LC-PG45-SD |
| Uni-Directional Pocket | up to LC-PG40-SD |
| Bi-Parting Stacked | up to LC-PG40-SD |
| Bi-Parting Pocket | up to LC-PG40-SD |
| Dual-Pane IG Low E2 with Argon | 0.28 U-factor |

MULTI-SLIDE CONFIGURATIONS AND SIZING

Over 30 Configurations available
 Uni-Directional configurations: 1 to 6 panels, available in stacked or pocket
 Bi-Parting configurations: 2 to 10 panels, available in stacked or pocket

Sized to order up to 6' x 12' panels

Meeting stiles are less than 3" wide

MINIMUMS AND MAXIMUMS

MODERN MULTI-SLIDE DOOR STACKED

| UNIT TYPE | MIN FRAME SIZE UNIT | | MAX FRAME SIZE UNIT | | MAX FRAME SIZE UNIT | |
|------------------|---------------------|----------|--------------------------|--------|----------------------------|--------|
| | WIDTH | HEIGHT | WIDTH | HEIGHT | WIDTH | HEIGHT |
| UNI-DIRECTIONAL | | | Based on 6ft wide panels | | Based on >6ft wide panels* | |
| OX OR XO | 55 11/16" | 62 3/64" | 143 11/16" | 144" | 191 11/16" | 120" |
| OXX OR XXO | 80 13/16" | 62 3/64" | 212 13/16" | 144" | 284 13/16" | 120" |
| OXXX OR XXXO | 105 15/16" | 62 3/64" | 281 15/16" | 144" | NA | NA |
| OXXXX OR XXXXO | 131 1/16" | 62 3/64" | 351 1/16" | 144" | NA | NA |
| OXXXXX OR XXXXXO | 156 3/16" | 62 3/64" | 420 3/16" | 144" | NA | NA |

| UNIT TYPE | MIN FRAME SIZE UNIT | | MAX FRAME SIZE UNIT | | MAX FRAME SIZE UNIT | |
|---------------|---------------------|-----------|--------------------------|--------|----------------------------|--------|
| | WIDTH | HEIGHT | WIDTH | HEIGHT | WIDTH | HEIGHT |
| BI-PARTING | | | Based on 6ft wide panels | | Based on >6ft wide panels* | |
| OX - XO | 109 3/4" | 76 39/64" | 285 3/4" | 144" | 381 3/4" | 120" |
| OXX - XXO | 160" | 76 39/64" | 424" | 144" | 568" | 120" |
| OXXX - XXXO | 210 1/4" | 76 39/64" | 562 1/4" | 144" | NA | NA |
| OXXXX - XXXXO | 260 1/2" | 76 39/64" | 700 1/2" | 144" | NA | NA |

O = Stationary Panel X = Operating Panel
*Panel quantity per unit limited to two panels

HARDWARE FINISHES Split finishes available.



For the most complete technical information, visit marvin.com or talk with your Marvin Modern dealer.

MINIMUMS AND MAXIMUMS

MODERN MULTI-SLIDE DOOR POCKET

| UNIT TYPE | MIN FRAME SIZE UNIT | | MAX FRAME SIZE UNIT | | MAX FRAME SIZE UNIT | |
|--------------------|---------------------|-----------|--------------------------|--------|----------------------------|--------|
| | WIDTH | HEIGHT | WIDTH | HEIGHT | WIDTH | HEIGHT |
| UNI-DIRECTIONAL | | | Based on 6ft wide panels | | Based on >6ft wide panels* | |
| PX OR XP | 30 9/16" | 68 19/64" | 74 9/16" | 144" | 98 9/16" | 120" |
| PXX OR XXP | 55 11/16" | 68 19/64" | 143 11/16" | 144" | 191 11/16" | 120" |
| PXXX OR XXXP | 80 13/16" | 68 19/64" | 212 13/16" | 144" | NA | NA |
| PXXXX OR XXXXP | 105 15/16" | 68 19/64" | 281 15/16" | 144" | NA | NA |
| PXXXXX OR XXXXXP | 131 1/16" | 68 19/64" | 351 1/16" | 144" | NA | NA |
| PXXXXXX OR XXXXXXP | 156 1/16" | 68 19/64" | 420 3/16" | 144" | NA | NA |

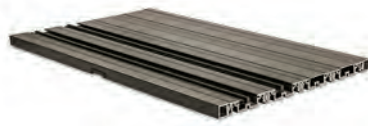
| UNIT TYPE | MIN FRAME SIZE UNIT | | MAX FRAME SIZE UNIT | | MAX FRAME SIZE UNIT | |
|----------------|---------------------|-----------|--------------------------|--------|----------------------------|--------|
| | WIDTH | HEIGHT | WIDTH | HEIGHT | WIDTH | HEIGHT |
| BI-PARTING | | | Based on 6ft wide panels | | Based on >6ft wide panels* | |
| PX - XP | 59 1/2" | 80 55/64" | 147 1/2" | 144" | 195 1/2" | 120" |
| PXX - XXP | 109 3/4" | 80 55/64" | 285 3/4" | 144" | 381 3/4" | 120" |
| PXXX - XXXP | 160" | 80 55/64" | 424" | 144" | NA | NA |
| PXXXX - XXXXP | 210 1/4" | 80 55/64" | 562 1/4" | 144" | NA | NA |
| PXXXXX - XXXXP | 260 1/2" | 80 55/64" | 700 1/2" | 144" | NA | NA |

P = Pocket Panel X = Operating Panel
*Panel quantity per unit limited to two panels

SILL OPTIONS

We've innovated every aspect of the new Modern line, right down to the smallest details. We offer flush sill options for both temperate and inclement conditions as well as a performance sill for areas where recessing isn't an option.

Pictured right: Detail of the Flush Sill

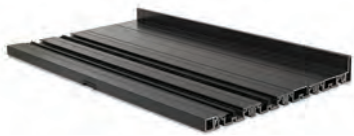


FLUSH SILL

Recommended for protected areas

Not certified for performance

ADA capable when properly installed



PERFORMANCE SILL

Recommended for areas where performance is needed and the sill is not recessed

Rated and certified for performance



HIGH PERFORMANCE SILL

Ultimate performance

Rated and certified for performance

ADA capable when properly installed



CURATED COLORS

Our intentionally selected color palette evokes the elemental nature of modern design. Choose split interior and exterior color finishes or matching finishes designed to coordinate.

INTERIOR COLORS • LOW-GLOSS ALUMINUM

EXTERIOR COLORS • HIGH-DENSITY FIBERGLASS

GUNMETAL

GUNMETAL

BRONZE

BRONZE

EBONY

EBONY

CLEAR ANODIZED

SILVER

STONE WHITE

STONE WHITE



THIS IS ONLY THE BEGINNING.

EXPERIENCE IT AT YOUR

MARVIN® MODERN DEALER TODAY.

At Marvin® Windows and Doors,
we aim to continue our legacy
of craftsmanship and innovation
by creating beautiful, high-quality
products that improve the lives
of the people who use them.

#19983042

Marvin Windows and Doors, Warroad, MN 56763.

©2018 Marvin Windows and Doors. All rights reserved.
®Registered trademark of Marvin Windows and Doors.
Information regarding status of patent applications,
as well as product features and specifications, is subject
to change without notice.

For warranty information, please visit marvin.com

Please note: Colors shown in printed materials are
simulations and may not precisely duplicate product
or finish colors. Contact your local Marvin Modern
dealer to view actual product and finish color samples.